

# Differential Diagnosis of Asthma

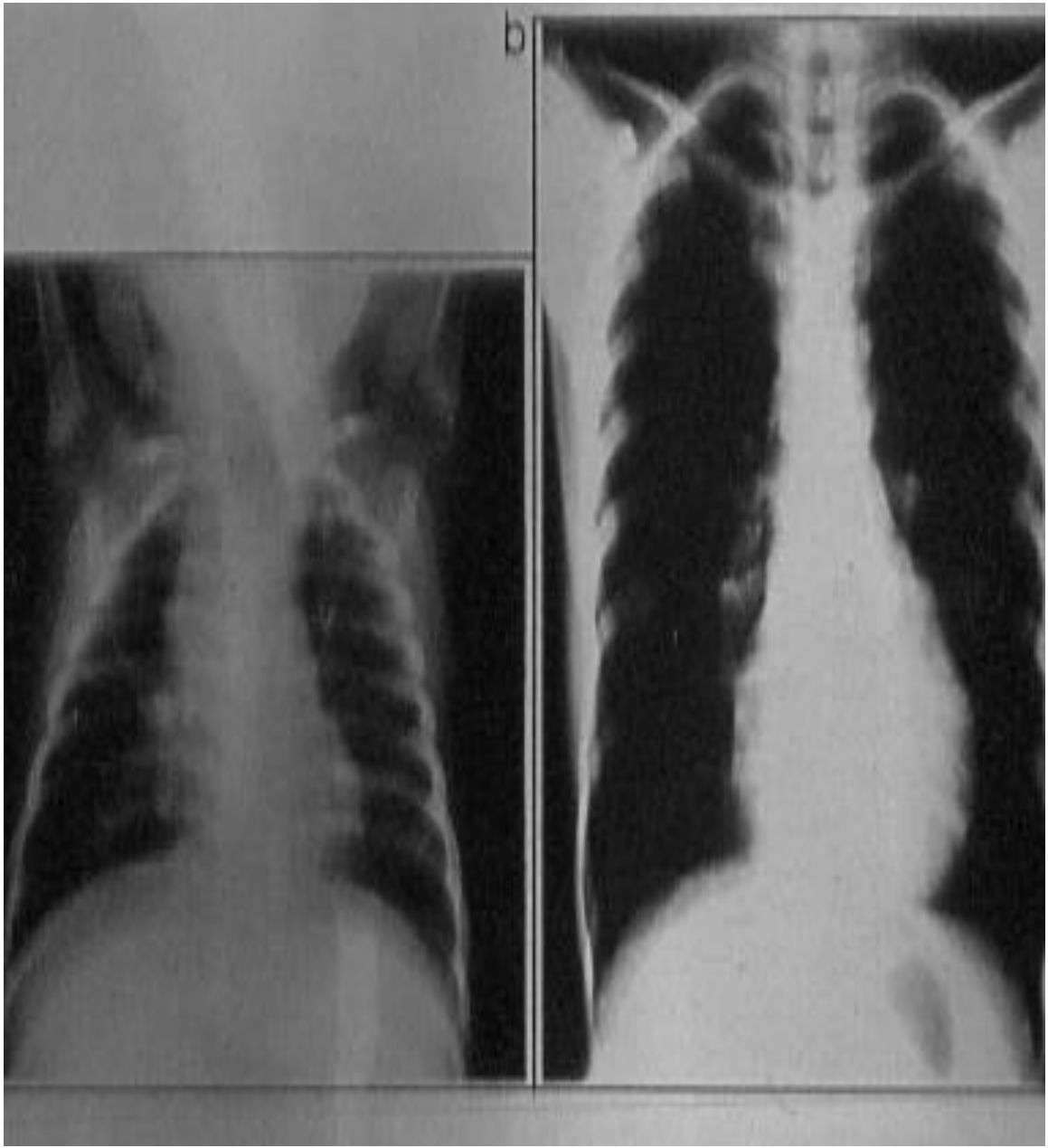
Dr. R. Amin

Professor of Allergy and Clinical  
Immunology

Shiraz University of Medical Sciences

# Differential diagnosis possibilities for asthma in infants and children

- Upper airway diseases
  - Allergic rhinitis and sinusitis
- Obstructions involving large airways
  - Foreign body in the trachea or bronchus
  - Vocal cord dysfunction
  - Vascular rings or laryngeal webs
  - Laryngotracheomalacia, tracheal stenosis, or bronchostenosis
  - Enlarged lymph nodes or tumor
- Obstructions involving small airways
  - Viral bronchiolitis or obliterative bronchiolitis
  - Cystic fibrosis
  - Bronchopulmonary dysplasia (chronic lung disease of prematurity)
  - Heart disease
- Other causes
  - Recurrent cough not due to asthma (infection, habit cough, postnasal drip)
  - Aspiration from swallowing mechanism dysfunction of GERD



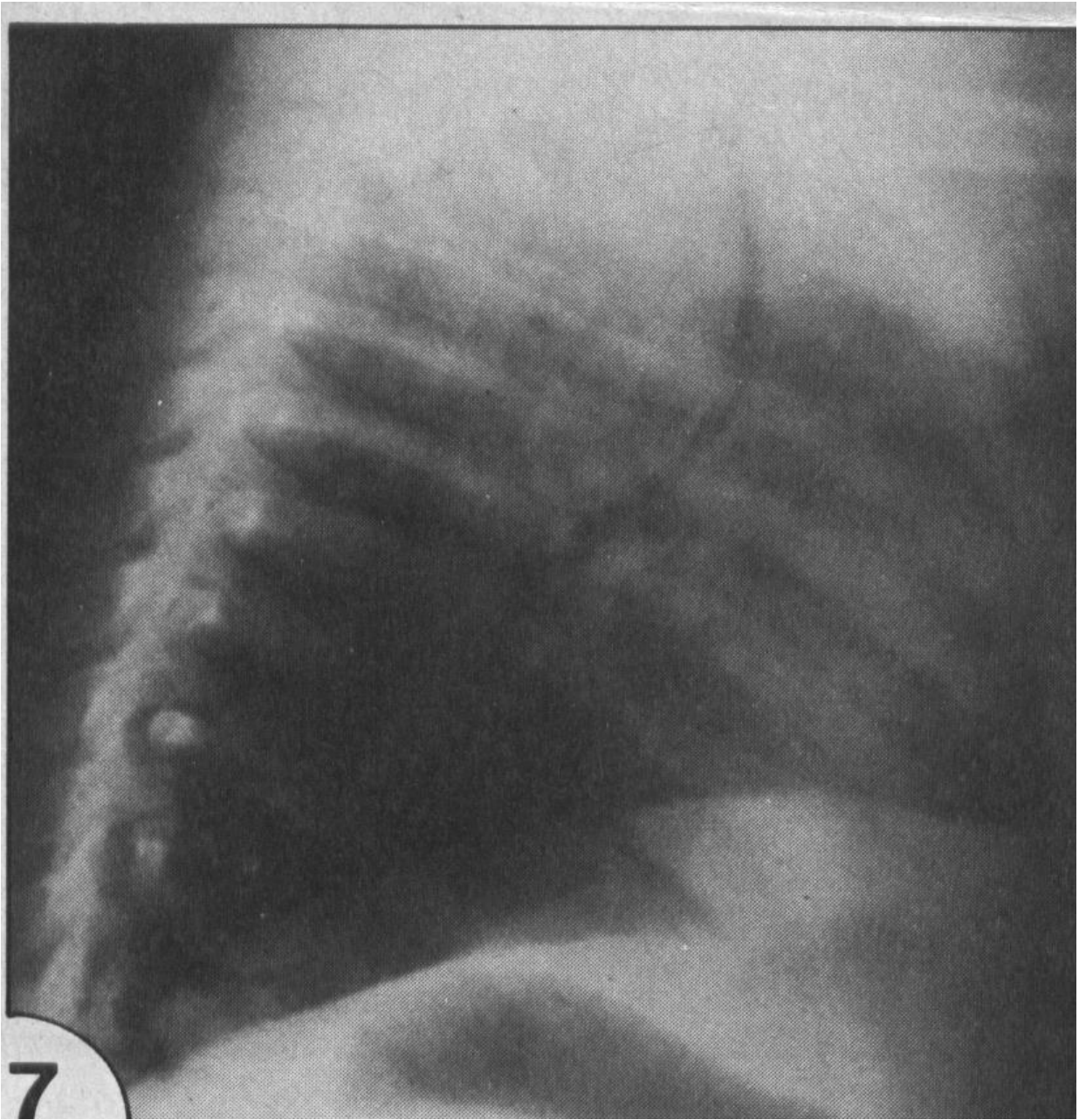




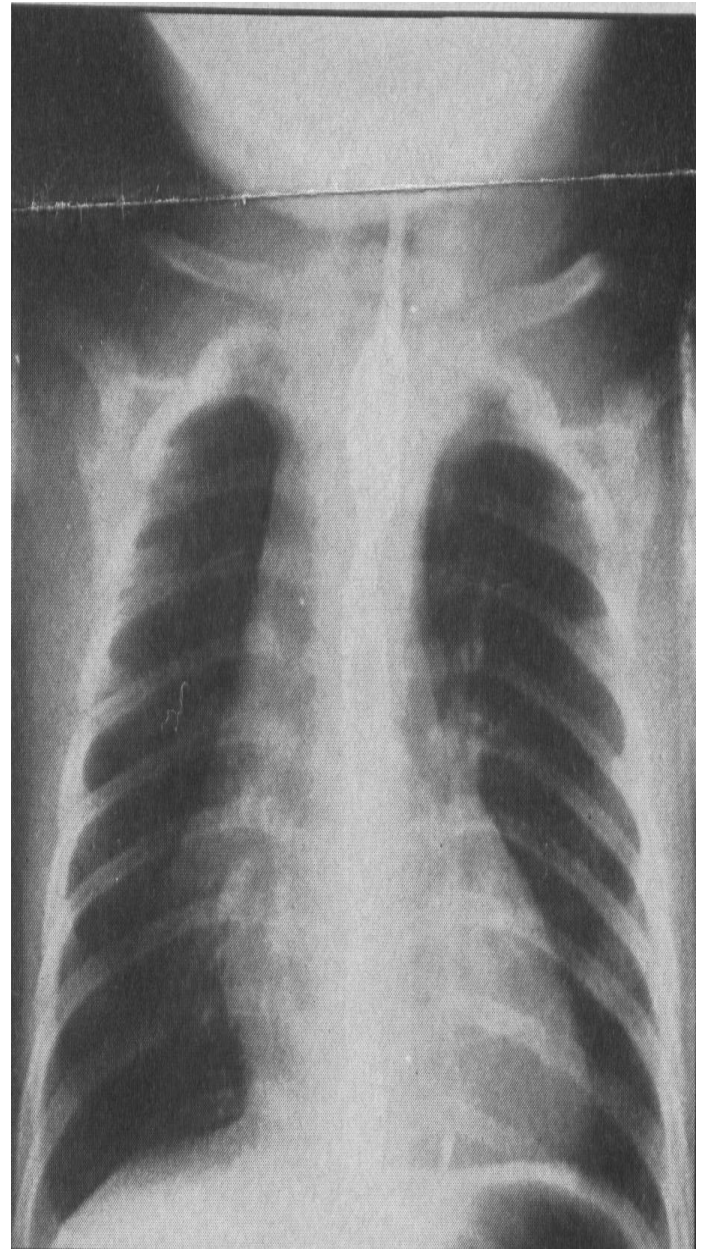


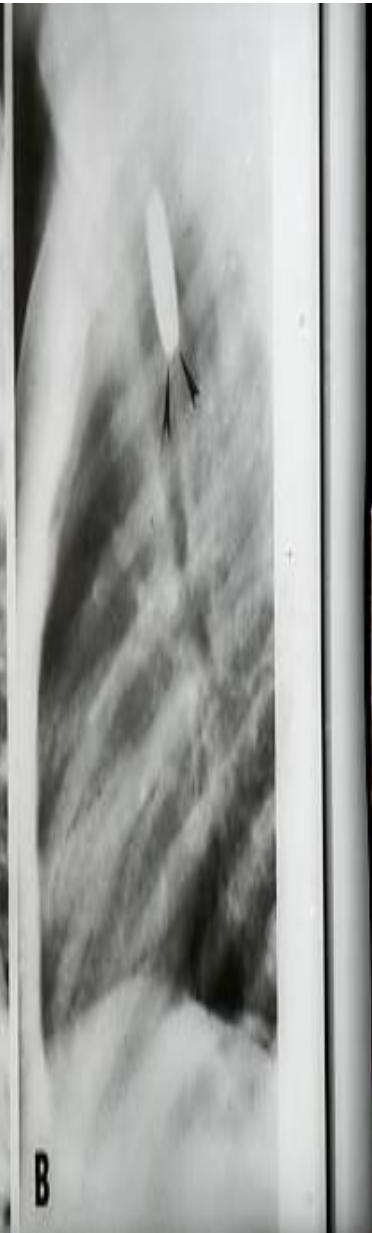


*Figure 5-48* Aspiration pneumonia in right upper lobe in infant with marked pharyngeal incoordination.

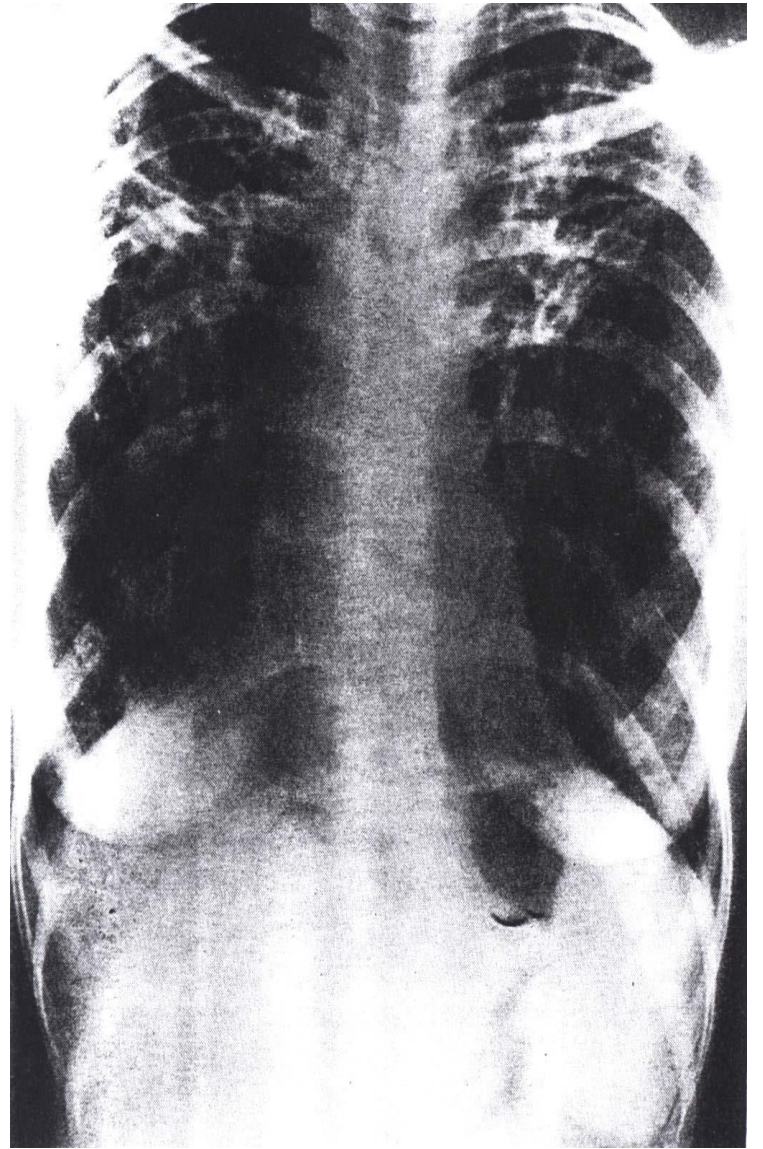
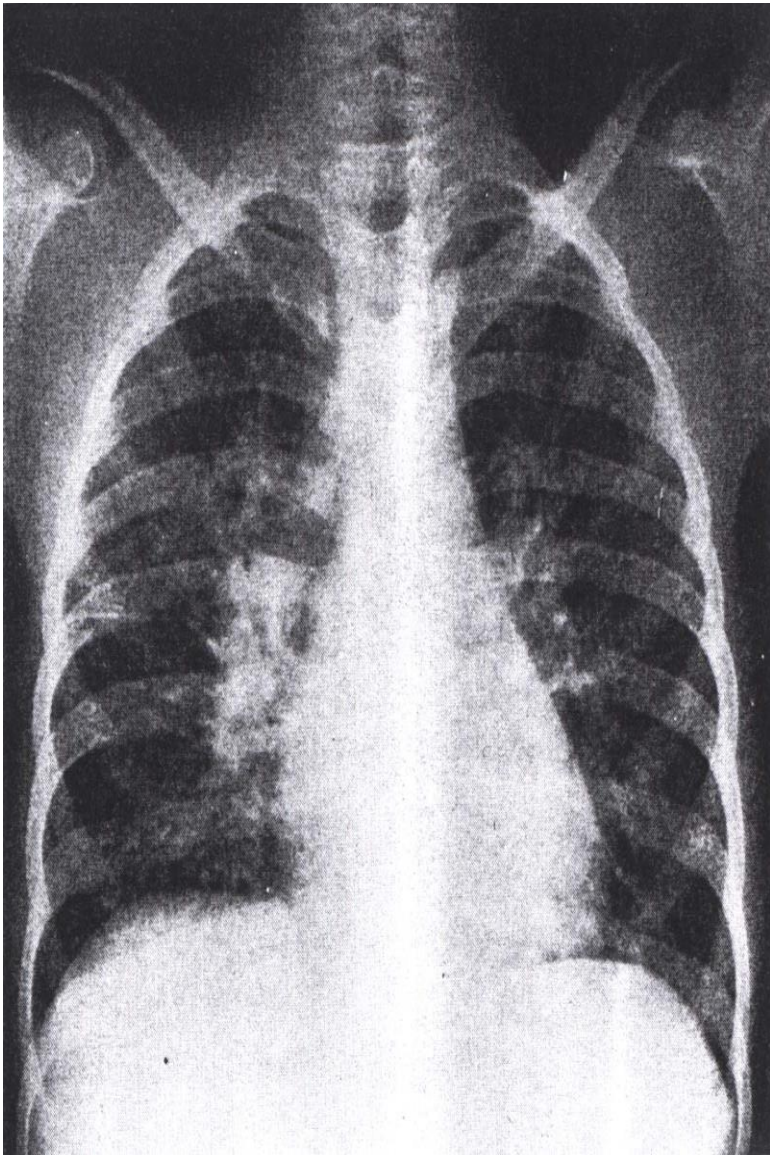


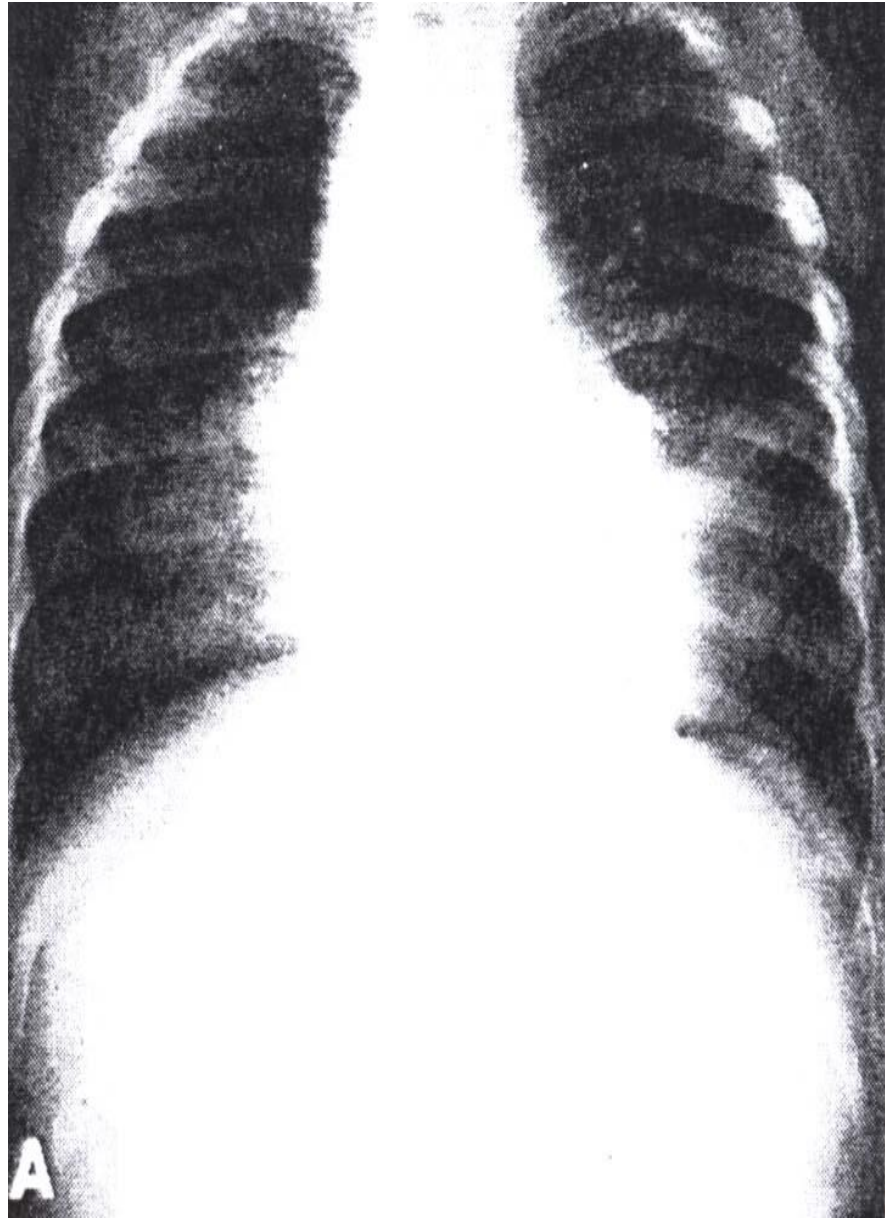




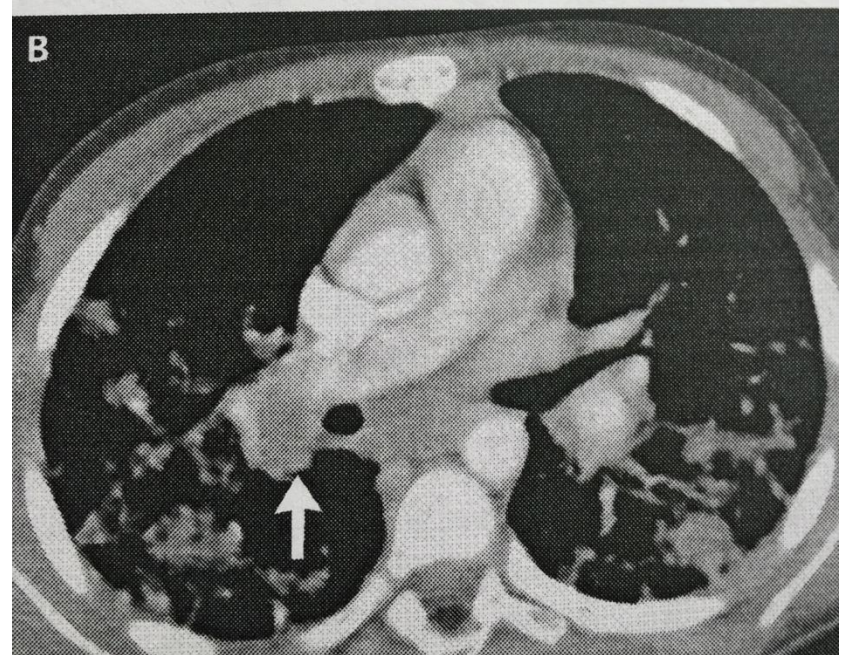
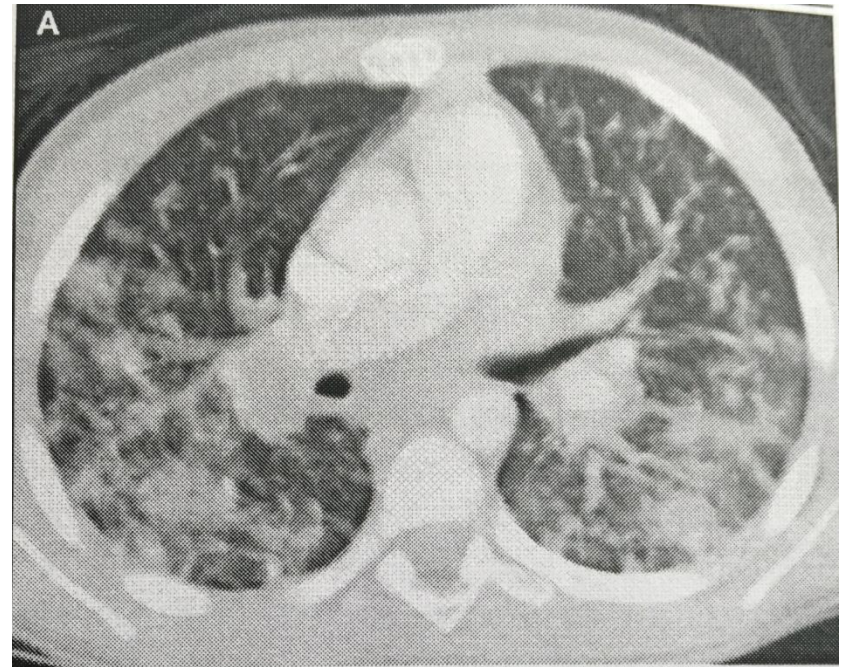
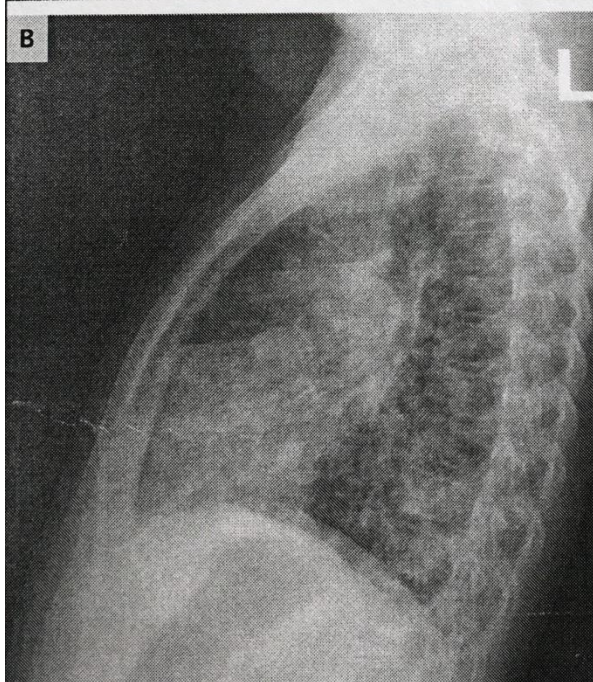
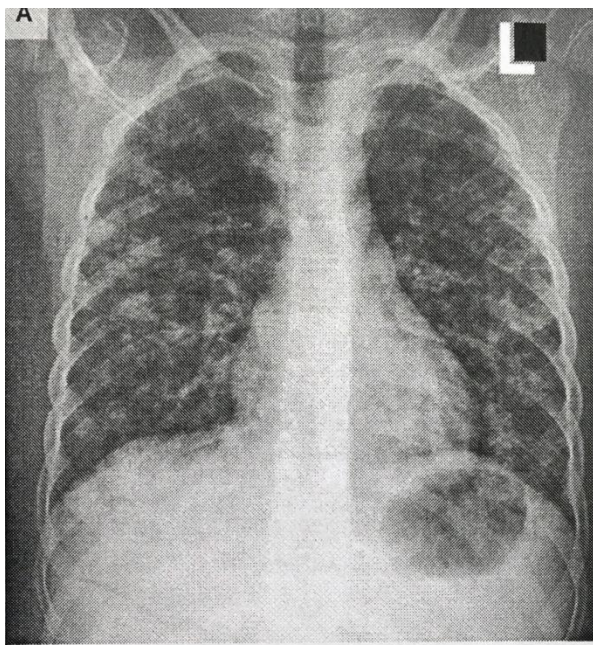




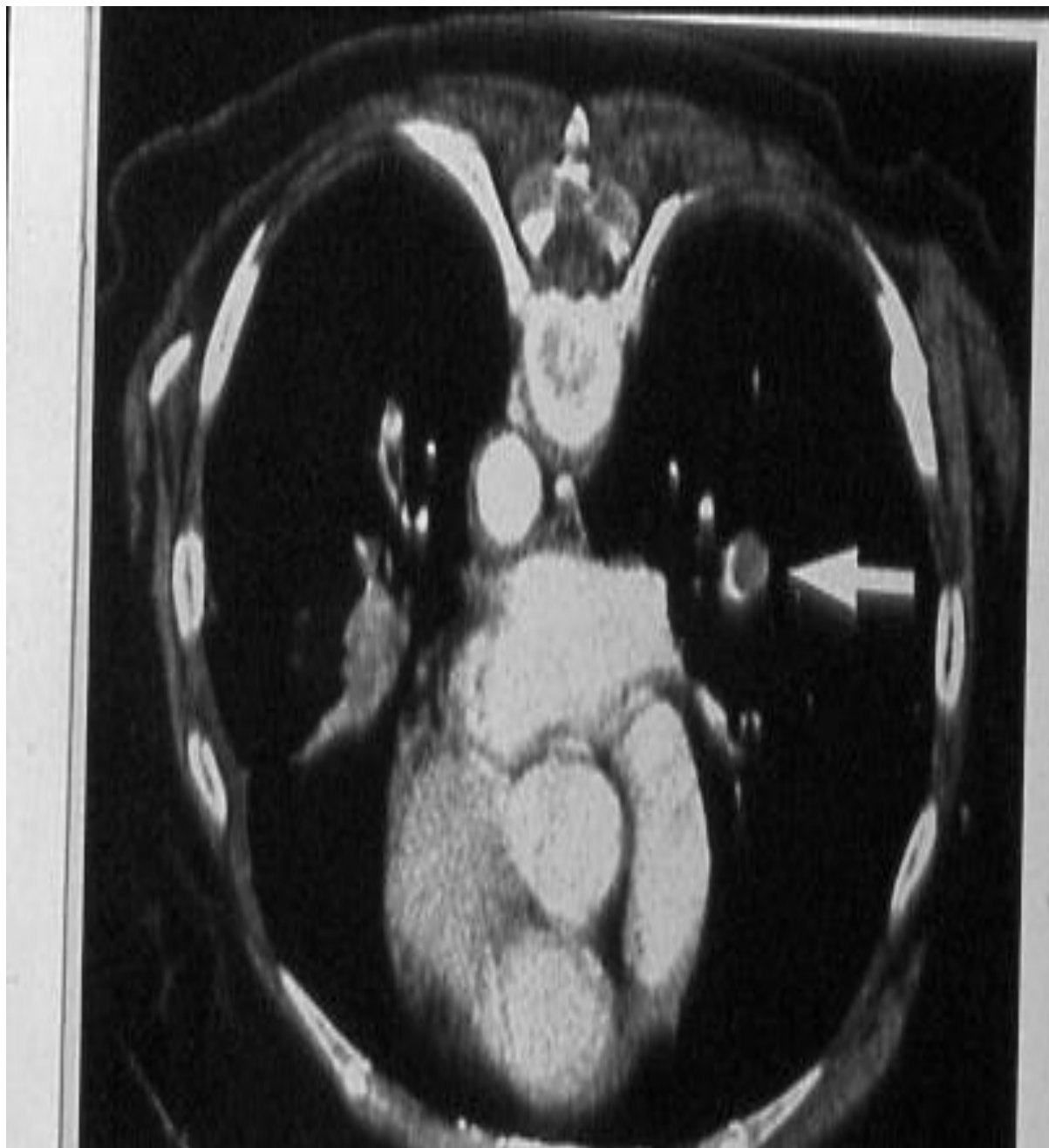


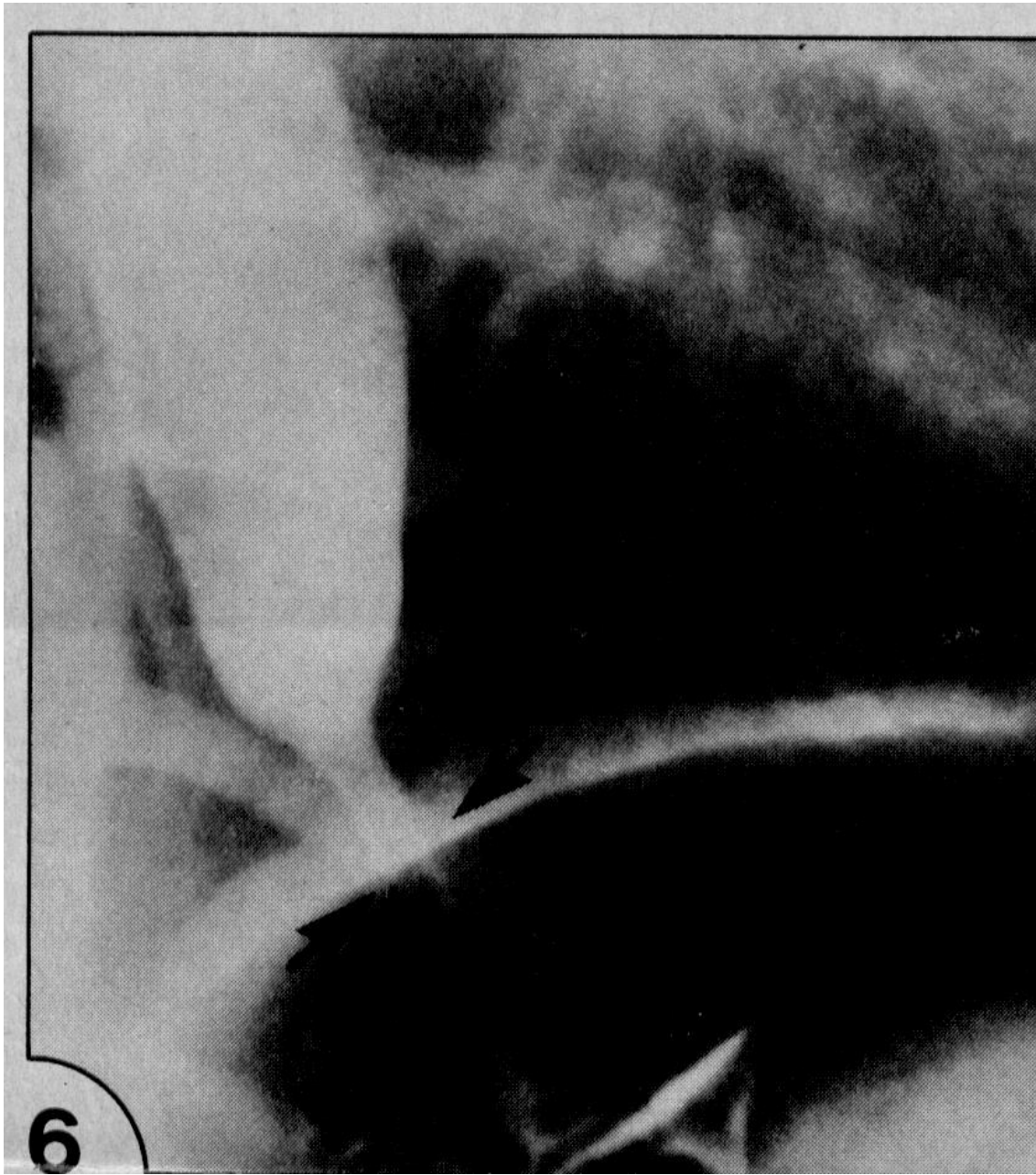


















# Case Presentation

A 9 year old female with  
2 years H/O cough, episodes of wheezing ,  
chest pain, tightness on exertion . Frequent  
arthralgia fatigue , GEN↑ L. N , otitis media &  
sinusitis

WT = 26.5kg ( 5 th Percentile)

HT = 126 cm ( <5 th percentile)

Mobile tender cervical , axillary & inguinal L.N

Hb= 13.2

WBC= 20 .700 82% PMN 13 lymph 5% mono

U/A LFT, CPK , LDH normal

ESR = 15 mm/hr

